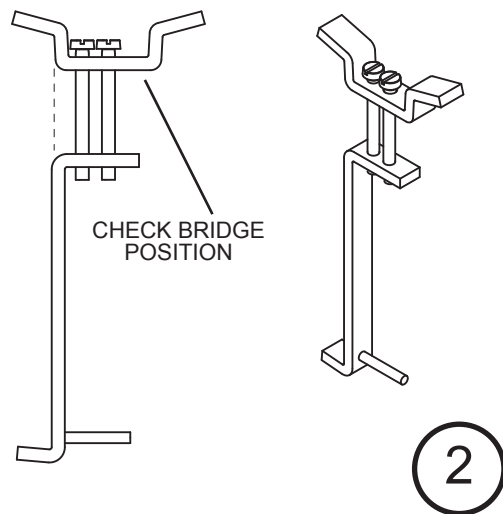
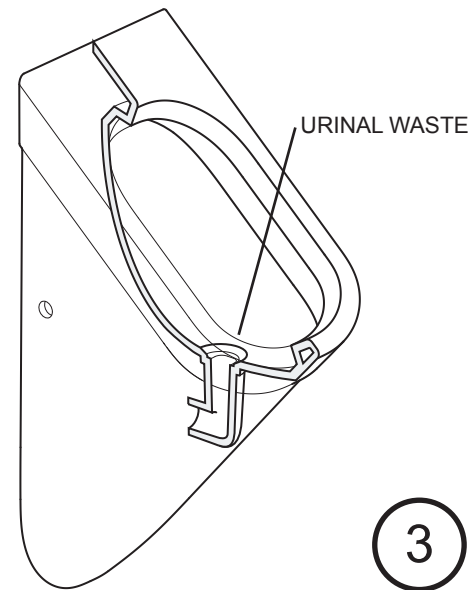


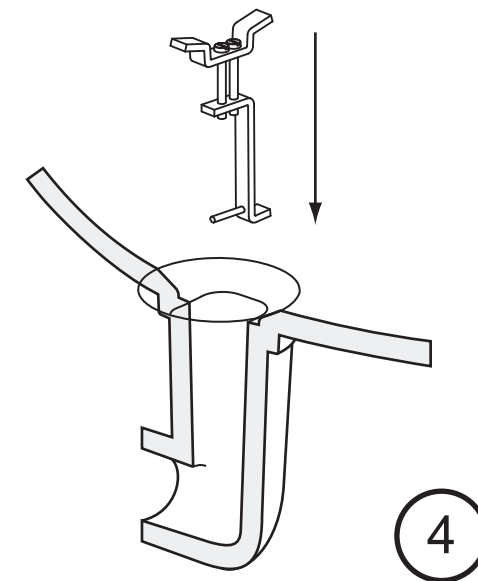
OPEN VANDAL RESISTANT KIT



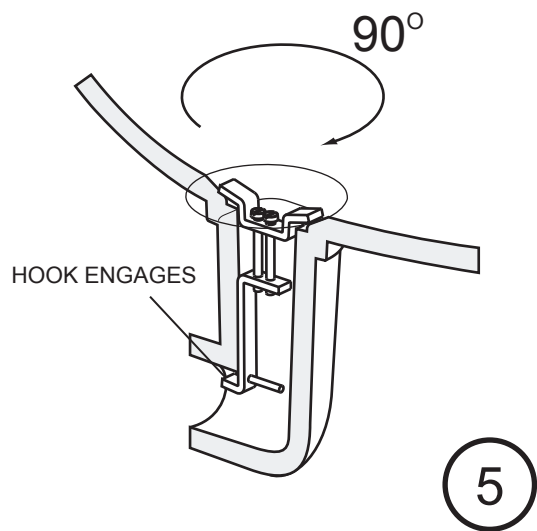
ASSEMBLE PARTS AS SHOWN



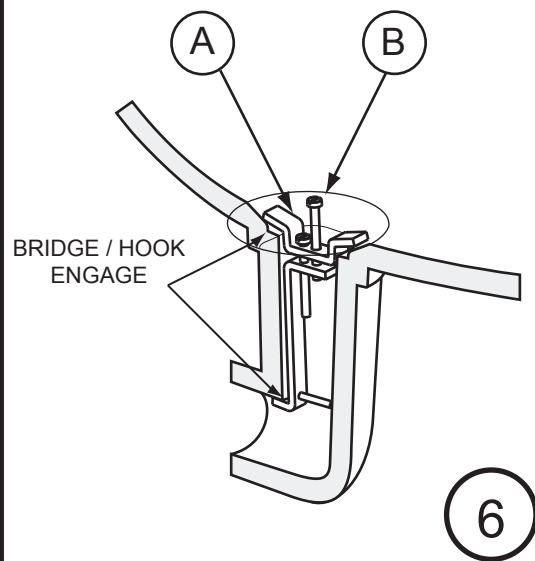
LOCATE URINAL WASTE



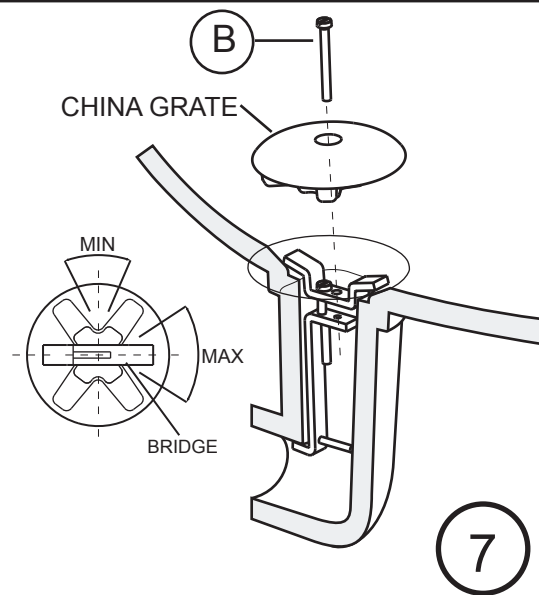
INSERT ASSEMBLY AS SHOWN



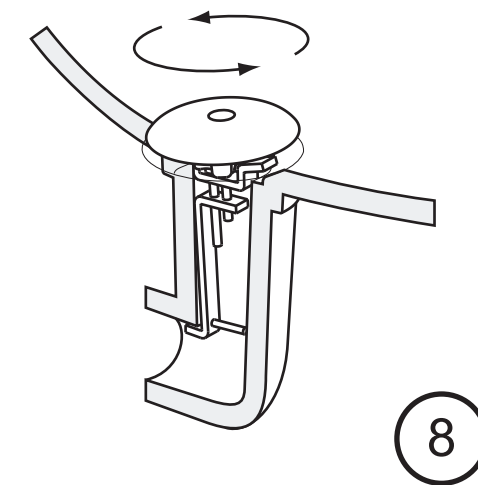
ROTATE ASSEMBLY 90 DEGREES AND ENSURE HOOK ENGAGES INTO WASTE



TIGHTEN SCREW A, ENSURING HOOK AND BRIDGE FIRMLY ENGAGE ONTO URINAL. REMOVE SCREW B.



LOCATE GRATE CORRECTLY ONTO BRIDGE. INSERT SCREW B INTO GRATE AND TIGHTEN ONTO ASSEMBLY



CHECK AND ENSURE THAT GRATE IS FIRMLY ATTACHED TO URINAL